

Sparse Learning and Structure Identification for Ultra-High-Dimensional Image-on-Scalar Regression¹

Xinyi Li

Joint Work with Lily Wang and Huixia Judy Wang

Big Data Neuroscience Workshop 2020

September 4, 2020

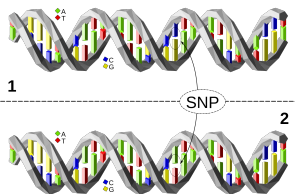
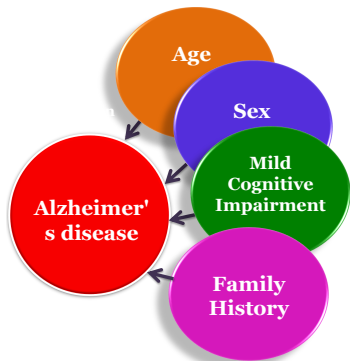
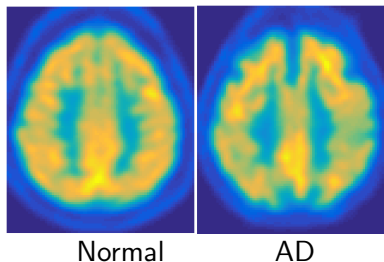


¹Accepted by JASA.

Motivating Example: Alzheimer's Disease Study

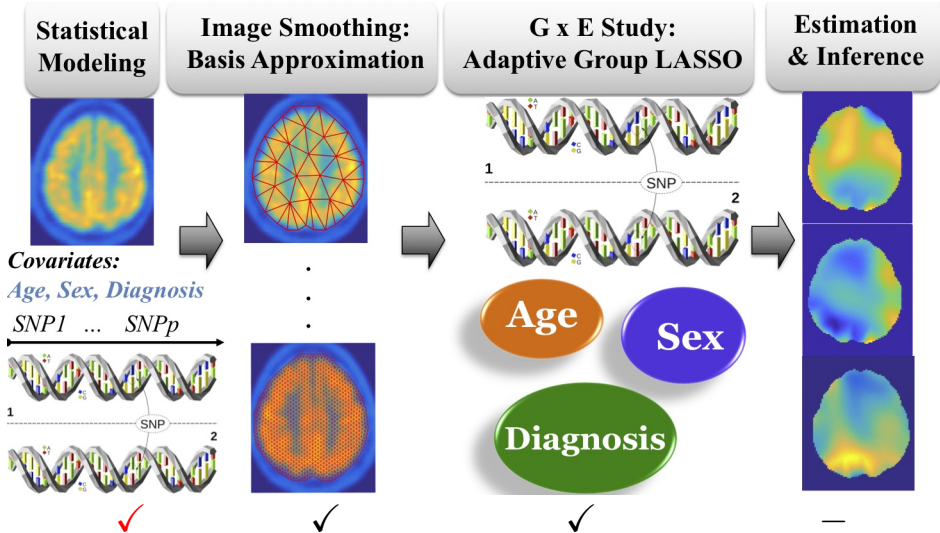


Courtesy of <http://www.mayoclinic.org>

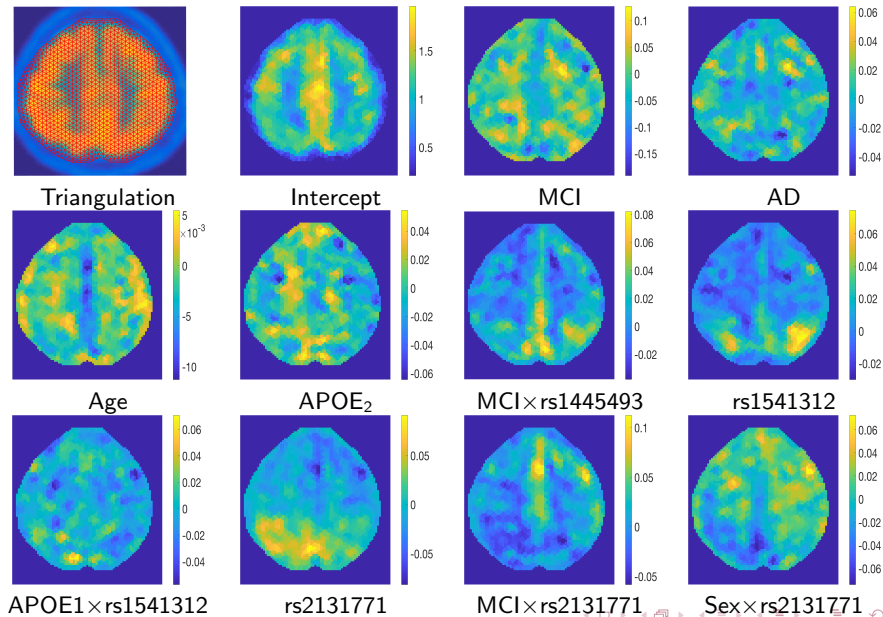


Courtesy of Wikimedia Commons

Method Illustration



ADNI Data: Estimated Coefficient Maps



ADNI Data: Estimated Coefficient Maps (Cont'd)

